

LABOR MARKET REVIEW

Economic Growth Region 7

Statistical Data Report for April 2018, Released June 2018

State Employment and Unemployment

Unemployment rates were lower in April in 4 states and stable in 46 states and the District of Columbia, the U.S. Bureau of Labor Statistics reported. Twelve states had jobless rate decreases from a year earlier and 38 states and the District had little or no change. The national unemployment rate edged down from March to 3.9 percent and was 0.5 percentage point lower than in April 2017.

Nonfarm payroll employment increased in 3 states in April 2018 and was essentially unchanged in 47 states and the District of Columbia. Over the year, 28 states added nonfarm payroll jobs, 1 state lost jobs, and 21 states and the District were essentially unchanged.

Hawaii had the lowest unemployment rate in April, 2.0 percent. The rates in California (4.2 percent), Hawaii (2.0 percent), and Wisconsin (2.8 percent) set new series lows. (All state series begin in 1976.) Alaska had the highest jobless rate, 7.3 percent. In total, 16 states had unemployment rates lower than the U.S. figure of 3.9 percent, 10 states and the District of Columbia had higher rates, and 24 states had rates that were not appreciably different from that of the nation.



Economic Growth Region (EGR) 7

Clay, Parke, Putnam, Sullivan, Vermillion and Vigo Counties

Unemployment Rates by State (seasonally adjusted): April 2018

U.S. - 3.9%

Illinois - 4.4%

Indiana - 3.2%

Kentucky - 4%

Michigan - 4.7%

Ohio - 4.3%

Source: U.S. Department of Labor, Bureau of Labor Statistics

Unemployment Rank by County (of 92 counties): April 2018

#1 - Vermillion (4.8%)

#6 - Sullivan (3.9%)

#14 - Vigo (3.6%)

#21 - Parke (3.4%)

#33 - Clay (3.1%)

#37 - Putnam (3.1%)

Source: Indiana Department of Workforce Development, Research and Analysis, Local Area Unemployment Statistics

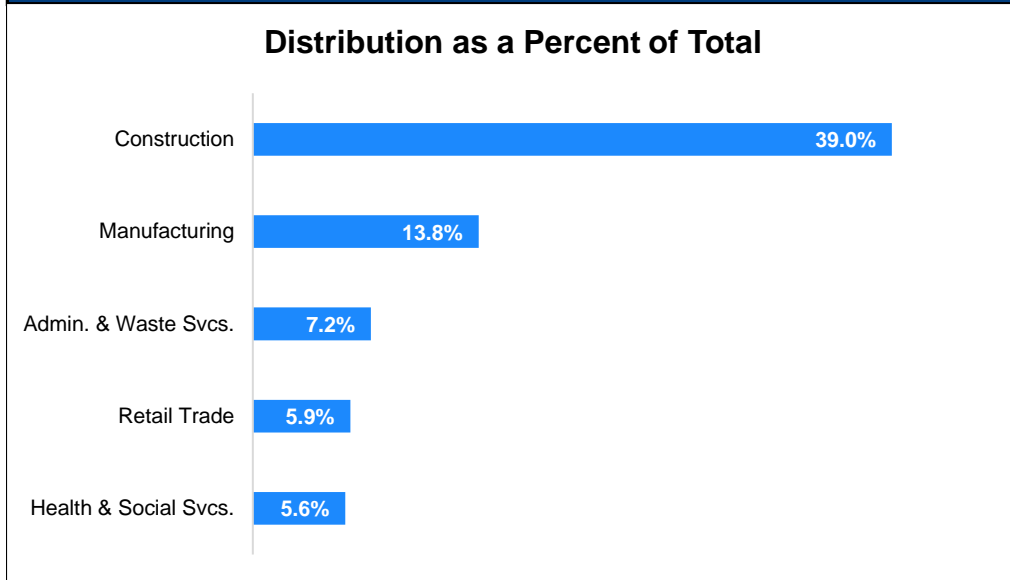
April 2018 Labor Force Estimates (not seasonally adjusted)						
Area	Labor Force	Employed	Unemployed	Apr-18	Mar-18	Apr-17
U.S.	161,280,000	155,348,000	5,932,000	3.7%	4.1%	4.1%
IN	3,370,041	3,270,909	99,132	2.9%	3.3%	3.0%
EGR 7	100,990	97,398	3,592	3.6%	4.0%	3.6%
Terre Haute MSA	77,084	74,254	2,830	3.7%	4.2%	3.7%
Clay Co.	12,293	11,908	385	3.1%	3.6%	3.2%
Parke Co.	7070	6828	242	3.4%	3.7%	3.5%
Putnam Co.	16,836	16,316	520	3.1%	3.4%	3.0%
Sullivan Co.	8541	8210	331	3.9%	4.6%	3.8%
Vermillion Co.	7,164	6,822	342	4.8%	5.6%	4.8%
Vigo Co.	49086	47314	1772	3.6%	4.1%	3.7%
Terre Haute	25,559	24,609	950	3.7%	4.2%	3.9%

Source: Indiana Department of Workforce Development, Research & Analysis, Local Area Unemployment Statistics | Unemployment Statistics Released: 05/18 | Notes: The data displayed are presented as estimates only. The most recent month's data are always preliminary and are revised when the next month's data are released.

Consumer Price Index (CPI-U Change), Unadjusted Percent Change to April 2018 from				
CPI Item	Apr-17	Mar-18	Apr-17	Mar-18
	U.S. City		Midwest Region*	
All Items	2.5%	0.4%	1.8%	0.4%
Food & Beverages	1.4%	0.3%	1.4%	0.5%
Housing	3.0%	0.2%	2.4%	0.2%
Apparel	0.8%	0.6%	-1.0%	-0.2%
Transportation	4.1%	1.4%	2.8%	1.2%
Medical Care	2.2%	0.0%	0.7%	0.0%
Recreation	0.3%	-0.3%	0.6%	0.1%
Education & Communication	0.1%	-0.1%	0.4%	-0.1%
Other Goods & Services	2.4%	0.7%	3.0%	1.8%

*Midwest region = Midwest Urban Average. Midwest Region includes Illinois, Indiana, Iowa, Kansas, Michigan, Minnesota, Missouri, Nebraska, North Dakota, Ohio, South Dakota and Wisconsin | Source: U.S. Bureau of Labor Statistics

Percentage of Unemployment Claims for Top 5 Region 7 Industries April 2018



Source: Indiana Department of Workforce Development, Research and Analysis

WARN Notices

WARN Notices for Region 7 for April 2018				
Company	City	County	# of workers affected	Notice Date
Honey Creek Carson's	Terre Haute	Vigo		

Source: Indiana Department of Workforce Development, WARN Notices | For information on WARN Act requirements, you may go to the U.S. Department of Labor Employment Training Administration Fact Sheet: <https://www.doleta.gov/programs/factsht/warn.htm>

Unemployment Claims: April 2018

Region 7

Initial Claims

04/07/18 - 124(D)
04/14/18 - 54(D)
04/21/18 - 63(D)
04/28/18 - 59(D)

Continued Claims

04/07/18 - 700
04/14/18 - 605
04/21/18 - 549
04/28/18 - 524

Total Claims

04/07/18 - 824
04/14/18 - 659
04/21/18 - 612
04/28/18 - 583

State of Indiana

Initial Claims

04/07/18 - 2,529
04/14/18 - 2,398
04/21/18 - 1,855
04/28/18 - 1,805

Continued Claims

04/07/18 - 16,048
04/14/18 - 15,025
04/21/18 - 14,532
04/28/18 - 13,504

Total Claims

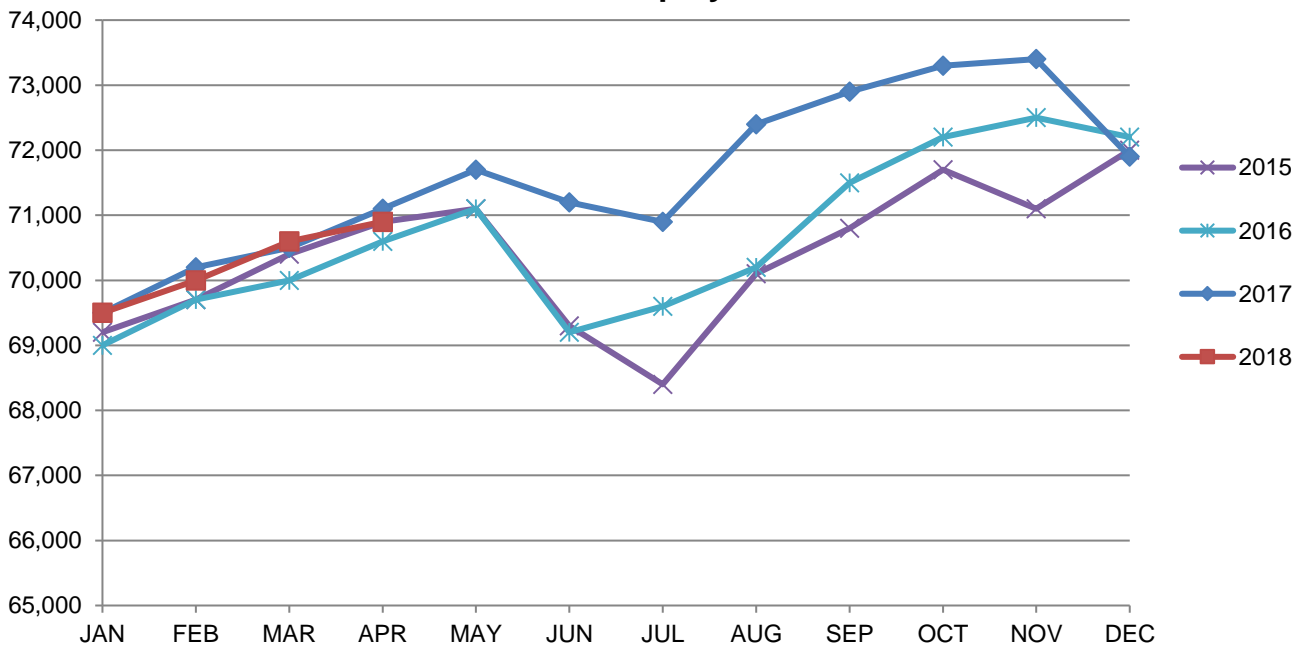
04/07/18 - 18,577
04/14/18 - 17,423
04/21/18 - 16,387
04/28/18 - 15,309

(D) indicates item is affected by non-disclosure issues relating to industry or ownership status | Source: Indiana Department of Workforce Development, Research and Analysis

Terre Haute MSA							
Wage and Salaried Employment	April 2018			# Change	% Change	# Change	% Change
Industry	Apr-18	Mar-18	Apr-17	Mar-18 to Apr-18	Apr-17 to Apr-18		
Total Nonfarm	70,900	70,600	71,100	300	0.4%	-200	-0.3%
Total Private	57,700	57,400	58,000	300	0.5%	-300	-0.5%
Goods Producing	14,400	14,300	14,100	100	0.7%	300	2.1%
Service-Providing	56,500	56,300	57,000	200	0.4%	-500	-0.9%
Private Service Providing	43,300	43,100	43,900	200	0.5%	-600	-1.4%
Mining, Logging and Construction	4,000	3,700	3,700	300	8.1%	300	8.1%
Manufacturing	10,400	10,600	10,400	-200	-1.9%	0	0.0%
Trade, Transportation, and Utilities	12,400	12,500	12,900	-100	-0.8%	-500	-3.9%
Wholesale Trade	1,500	1,500	1,600	0	0.0%	-100	-6.3%
Retail Trade	8,700	8,700	8,800	0	0.0%	-100	-1.1%
Transportation, Warehousing, and Utilities	2,200	2,300	2,500	-100	-4.4%	-300	-12.0%
Information	500	500	500	0	0.0%	0	0.0%
Financial Activities	2,500	2,500	2,500	0	0.0%	0	0.0%
Professional and Business Services	5,000	4,900	5,200	100	2.0%	-200	-3.9%
Education and Health Services	12,200	12,300	12,100	-100	-0.8%	100	0.8%
Leisure and Hospitality	7,800	7,600	7,900	200	2.6%	-100	-1.3%
Other Services	2,900	2,800	2,800	100	3.6%	100	3.6%
Total Government	13,200	13,200	13,100	0	0.0%	100	0.8%
Federal Government	1,300	1,200	1,300	100	8.3%	0	0.0%
State Government	4,900	5,000	4,900	-100	-2.0%	0	0.0%
Local Government	7,000	7,000	6,900	0	0.0%	100	1.5%
Local Government Educational Services	3,500	3,600	3,500	-100	-2.8%	0	0.0%

Source: Indiana Dept. of Workforce Development, Research and Analysis, Current Employment Statistics

Terre Haute MSA Employment Trends



Source: Indiana Department of Workforce Development, Research & Analysis, Current Employment Statistics | Note: Historical data for the most recent 4 years (both seasonally adjusted and not seasonally adjusted) are revised near the beginning of each calendar year, prior to the release of January estimates for statewide data.

Frequently Listed Jobs	
Top 20 job listings in Region 7 in the past month	
Rank	Occupations
1	Registered Nurses
2	Nursing Assistants
3	Social and Human Service Assistants
4	Healthcare Practitioners and Technical Workers, All Other
5	Therapists, All Other
6	Licensed Practical and Licensed Vocational Nurses
7	Security Guards
8	Customer Service Representatives
9	Healthcare Support Workers, All Other
10	Surgical Technologists
11	Chief Executives
12	Counter Attendants, Cafeteria, Food Concession, and Coffee Shop
13	First-Line Supervisors of Office and Administrative Support Workers
14	Medical and Health Services Managers
15	Production Workers, All Other
16	Receptionists and Information Clerks
17	Bookkeeping, Accounting, and Auditing Clerks
18	Broadcast News Analysts
19	Bus and Truck Mechanics and Diesel Engine Specialists
20	Driver/Sales Workers

Source: Indiana Workforce Development, Indiana Career Connect

Applicant Pool	
Top 20 occupations desired by applicants on their resumes in the past 12 months	
Occupations	# of applicants
Production Workers, All Other	410
Assemblers and Fabricators, All Other	294
Helpers--Production Workers	256
Cashiers	193
Laborers and Freight, Stock, and Material Movers, Hand	153
Customer Service Representatives	147
Nursing Assistants	128
Managers, All Other	115
Welders, Cutters, Solderers, and Brazers	106
Office Clerks, General	103
Stock Clerks and Order Fillers	97
Carpenters	93
Combined Food Preparation and Serving Workers, Including Fast Food	93
Construction and Related Workers, All Other	92
Construction Laborers	92
Heavy and Tractor-Trailer Truck Drivers	82
Packaging and Filling Machine Operators and Tenders	77
Maintenance and Repair Workers, General	76
Packers and Packagers, Hand	76
Office and Administrative Support Workers, All Other	75

Source: Indiana Workforce Development, Indiana Career Connect

Data on display

Measuring the value of education



Elka Torpey | April 2018

It's hard to quantify the full value of an education. But U.S. Bureau of Labor Statistics (BLS) data consistently show that, in terms of dollars, education makes sense. As the chart shows, the more you learn, the more you earn. Median weekly earnings in 2017 for those with the highest levels of educational attainment—doctoral and professional degrees—were more than triple those with the lowest level, less than a high school diploma. And workers with at least a bachelor's degree earned more than the \$907 median weekly earnings for all workers.

The chart is showing unemployment rates by educational attainment. As that chart shows, the higher the level of education, the lower the unemployment rate. Compare unemployment by education level in 2017 with the overall unemployment rate of 3.6 percent.

Median weekly earnings (in dollars) and unemployment rate (in percent) by educational attainment, 2017

Educational attainment	Median usual weekly earnings	Unemployment rate
Doctoral degree	\$1,743	1.5%
Professional degree	1,836	1.5
Master's degree	1,401	2.2
Bachelor's degree	1,173	2.5
Associate degree	836	3.4
Some college, no degree	774	4.0
High school diploma, no college	712	4.6
Less than a high school diploma	520	6.5
Total	907	3.6

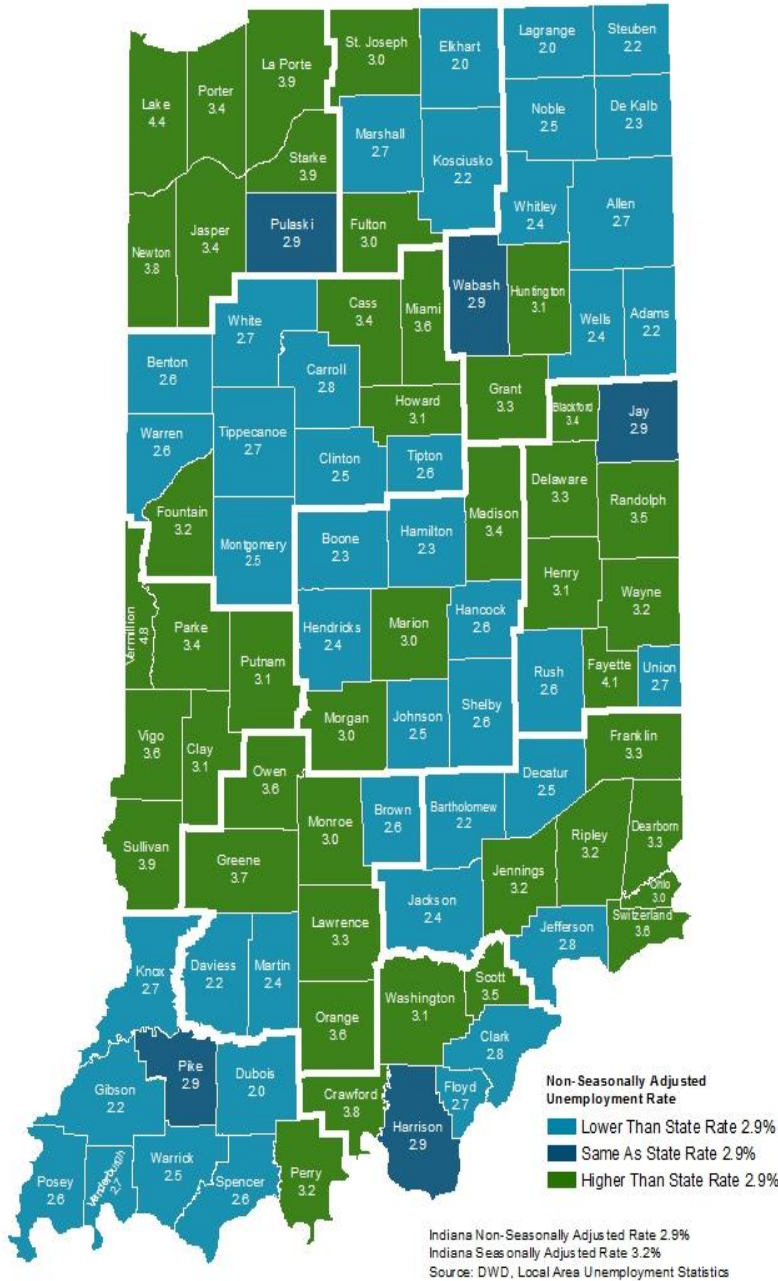
Note: Data are for persons age 25 and over. Earnings are for full-time wage and salary workers.
Source: U.S. Bureau of Labor Statistics, Current Population Survey.

Data in the chart indicate how weekly earnings and rates of unemployment vary by educational attainment for workers ages 25 and older at a broad level. Individual experiences differ, however, depending on factors such as your field of degree and your occupation.

These data are from the BLS [Current Population Survey](#), a monthly survey of households that collects information about demographic and labor force characteristics.

Elka Torpey, "Measuring the value of education," *Career Outlook*, U.S. Bureau of Labor Statistics, April 2018.

County Unemployment Rates April 2018



INDIANA DEPARTMENT OF **WORKFORCE** DEVELOPMENT

Questions?

Please contact the DWD
Regional Labor Analyst
listed below:

Kim Stevenson

Regional Workforce Analyst
Research and Analysis

[Indiana Department of
Workforce Development](http://Indiana Department of Workforce Development)

30 North 8th St

Terre Haute, IN 47807

812-242-6427

kstevenson@dwd.in.gov