

## LABOR MARKET REVIEW

# Economic Growth Region 7

Statistical Data Report for March 2018, Released May 2018

## State Employment and Unemployment

Unemployment rates were lower in March in 4 states, higher in 1 state, and stable in 45 states and the District of Columbia, the U.S. Bureau of Labor Statistics reported. Seventeen states had jobless rate decreases from a year earlier and 33 states and the District had little or no change. The national unemployment rate was unchanged from February at 4.1 percent but was 0.4 percentage point lower than in March 2017.

Hawaii had the lowest unemployment rate in March, 2.1 percent. The rates in Kentucky (4.0 percent) and Maine (2.7 percent) set new series lows. (All state series begin in 1976.) Alaska had the highest jobless rate, 7.3 percent. In total, 17 states had unemployment rates lower than the U.S. figure of 4.1 percent, 9 states and the District of Columbia had higher rates, and 24 states had rates that were not appreciably different from that of the nation.

In March, four states had unemployment rate decreases: Maine and New Mexico (-0.2 percentage point each) and Ohio and Wyoming (-0.1 point each). The only over-the-month rate increase was in Maryland (+0.1 percentage point). The remaining 45 states and the District of Columbia had jobless rates that were not notably different from those of a month earlier, though some had changes that were at least as large numerically as the significant changes.



### Economic Growth Region (EGR) 7

Clay, Parke, Putnam, Sullivan, Vermillion and Vigo Counties

### Unemployment Rates by State (seasonally adjusted): March 2018

**U.S. - 4.1%**

Illinois - 4.6%

**Indiana - 3.2%**

Kentucky - 4%

Michigan - 4.7%

Ohio - 4.4%

Source: U.S. Department of Labor, Bureau of Labor Statistics

### Unemployment Rank by County (of 92 counties): March 2018

#1 - Vermillion (5.6%)

#7 - Sullivan (4.6%)

#13 - Vigo (4.1%)

#25 - Parke (3.7%)

#28 - Clay (3.6%)

#42 - Putnam (3.4%)

Source: Indiana Department of Workforce Development, Research and Analysis, Local Area Unemployment Statistics

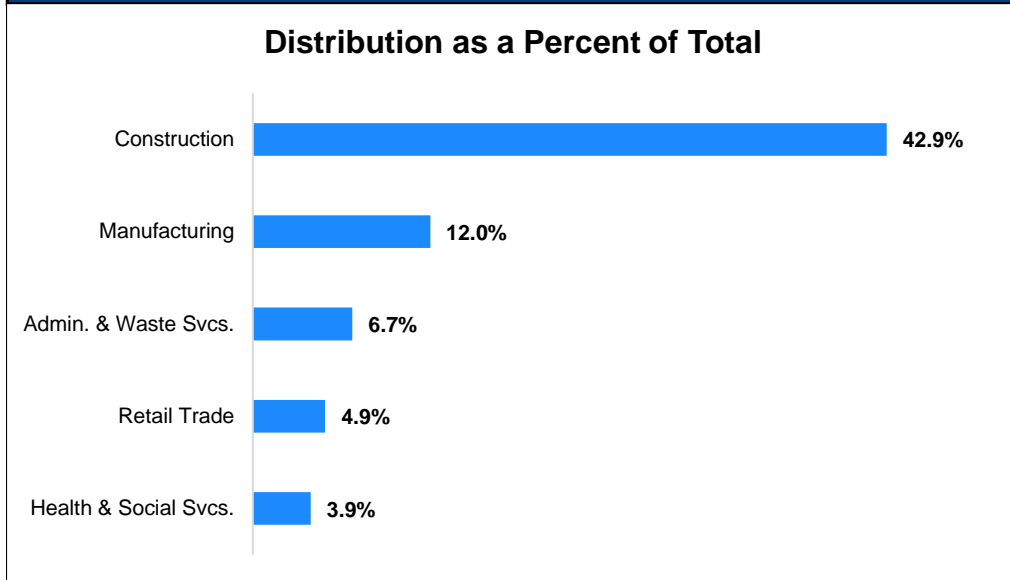
March 2018 Labor Force Estimates (not seasonally adjusted)						
Area	Labor Force	Employed	Unemployed	Mar-18	Feb-18	Mar-17
U.S.	161,548,000	154,877,000	6,671,000	4.1%	4.4%	4.6%
IN	3,350,175	3,239,843	110,332	3.3%	3.7%	3.7%
EGR 7	100,859	96,782	4,077	4.0%	4.7%	4.4%
Terre Haute MSA	77,058	73,818	3,240	4.2%	4.9%	4.5%
Clay Co.	12,288	11,848	440	3.6%	4.2%	4.0%
Parke Co.	6,974	6,713	261	3.7%	4.6%	4.4%
Putnam Co.	16,827	16,251	576	3.4%	3.9%	3.9%
Sullivan Co.	8,587	8,190	397	4.6%	5.2%	4.7%
Vermillion Co.	7,204	6,803	401	5.6%	6.5%	5.7%
Vigo Co.	48,979	46,977	2,002	4.1%	4.8%	4.4%
Terre Haute	25,506	24,434	1,072	4.2%	4.9%	4.7%

Source: Indiana Department of Workforce Development, Research & Analysis, Local Area Unemployment Statistics | Unemployment Statistics Released: 04/18 | Notes: The data displayed are presented as estimates only. The most recent month's data are always preliminary and are revised when the next month's data are released.

Consumer Price Index (CPI-U Change), Unadjusted Percent Change to March 2018 from				
CPI Item	Mar-17	Feb-18	Mar-17	Feb-18
	U.S. City		Midwest Region*	
<b>All Items</b>	<b>2.4%</b>	<b>0.2%</b>	<b>1.8%</b>	<b>0.2%</b>
Food & Beverages	1.3%	0.0%	1.0%	-0.1%
Housing	3.0%	0.3%	2.5%	0.2%
Apparel	0.3%	1.6%	1.0%	0.4%
Transportation	3.9%	0.2%	3.0%	0.6%
Medical Care	2.0%	0.2%	0.6%	0.1%
Recreation	0.6%	0.2%	0.6%	-0.2%
Education & Communication	-0.2%	-0.2%	-0.1%	-0.2%
Other Goods & Services	2.6%	0.2%	1.4%	1.0%

\*Midwest region = Midwest Urban Average. Midwest Region includes Illinois, Indiana, Iowa, Kansas, Michigan, Minnesota, Missouri, Nebraska, North Dakota, Ohio, South Dakota and Wisconsin | Source: U.S. Bureau of Labor Statistics

### Percentage of Unemployment Claims for Top 5 Region 7 Industries March 2018



Source: Indiana Department of Workforce Development, Research and Analysis

## WARN Notices

WARN Notices for Region 7 for March 2018				
Company	City	County	# of workers affected	Notice Date

**There are no WARN Notices for March 2018 for EGR 7.**

Source: Indiana Department of Workforce Development, WARN Notices | For information on WARN Act requirements, you may go to the U.S. Department of Labor Employment Training Administration Fact Sheet: <https://www.doleta.gov/programs/factsht/warn.htm>

## Unemployment Claims: March 2018

### Region 7

#### Initial Claims

03/03/18 - 60(D)  
03/10/18 - 51(D)  
03/17/18 - 46(D)  
03/24/18 - 31(D)  
03/31/18 - 47(D)

#### Continued Claims

03/03/18 - 930  
03/10/18 - 823  
03/17/18 - 794  
03/24/18 - 742  
03/31/18 - 742

#### Total Claims

03/03/18 - 990  
03/10/18 - 874  
03/17/18 - 840  
03/24/18 - 773  
03/31/18 - 789

### State of Indiana

#### Initial Claims

03/03/18 - 2,317  
03/10/18 - 2,042  
03/17/18 - 1,991  
03/24/18 - 2,017  
03/31/18 - 1,886

#### Continued Claims

03/03/18 - 21,040  
03/10/18 - 19,427  
03/17/18 - 18,212  
03/24/18 - 17,305  
03/31/18 - 17,004

#### Total Claims

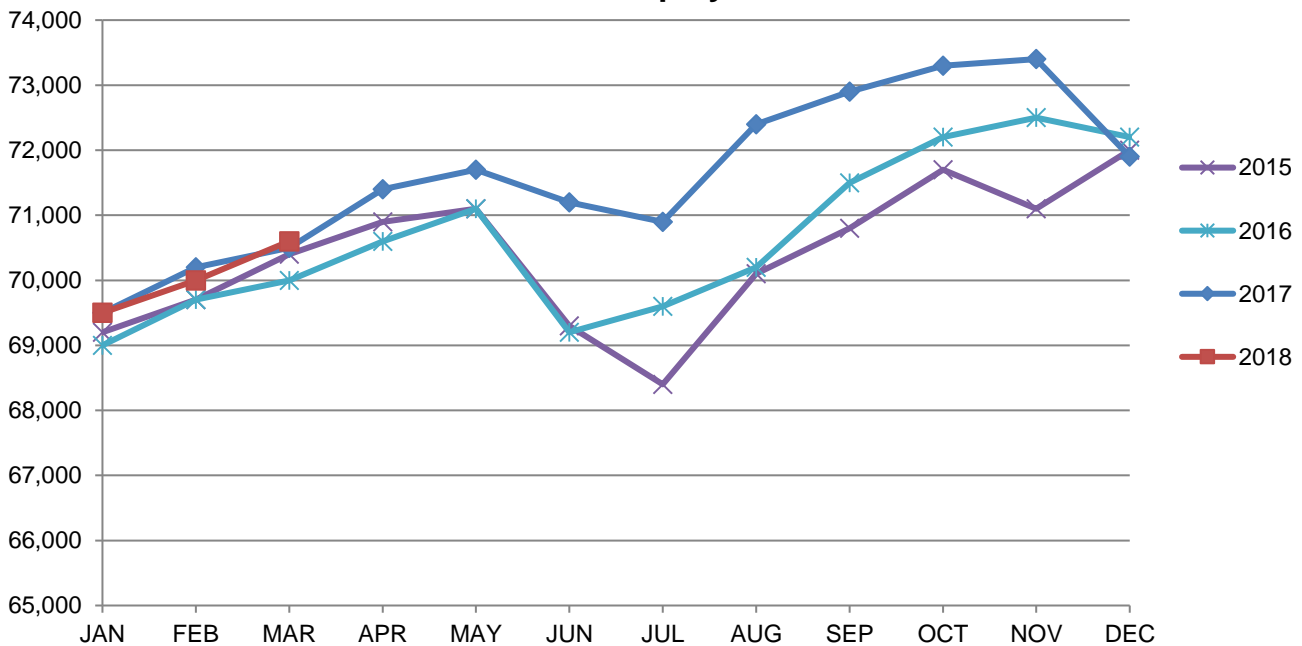
03/03/18 - 23,357  
03/10/18 - 21,469  
03/17/18 - 20,203  
03/24/18 - 19,322  
03/31/18 - 18,890

(D) indicates item is affected by non-disclosure issues relating to industry or ownership status | Source: Indiana Department of Workforce Development, Research and Analysis

Terre Haute MSA							
Wage and Salaried Employment	March 2018			# Change	% Change	# Change	% Change
Industry	Mar-18	Feb-18	Mar-17	Feb-18 to Mar-18		Mar-17 to Mar-18	
<b>Total Nonfarm</b>	<b>70,600</b>	<b>70,000</b>	<b>70,500</b>	<b>600</b>	<b>0.9%</b>	<b>100</b>	<b>0.1%</b>
<b>Total Private</b>	<b>57,300</b>	<b>56,800</b>	<b>57,100</b>	<b>500</b>	<b>0.9%</b>	<b>200</b>	<b>0.4%</b>
Goods Producing	14,300	14,000	13,900	300	2.1%	400	2.9%
Service-Providing	56,300	56,000	56,600	300	0.5%	-300	-0.5%
Private Service Providing	43,000	42,800	43,200	200	0.5%	-200	-0.5%
Mining, Logging and Construction	3,700	3,500	3,400	200	5.7%	300	8.8%
Manufacturing	10,600	10,500	10,500	100	1.0%	100	1.0%
Trade, Transportation, and Utilities	12,500	12,400	12,600	100	0.8%	-100	-0.8%
Wholesale Trade	1,500	1,500	1,500	0	0.0%	0	0.0%
Retail Trade	8,700	8,600	8,700	100	1.2%	0	0.0%
Transportation, Warehousing, and Utilities	2,300	2,300	2,400	0	0.0%	-100	-4.2%
Information	500	500	500	0	0.0%	0	0.0%
Financial Activities	2,400	2,500	2,500	-100	-4.0%	-100	-4.0%
Professional and Business Services	5,000	4,800	4,900	200	4.2%	100	2.0%
Education and Health Services	12,200	12,300	12,300	-100	-0.8%	-100	-0.8%
Leisure and Hospitality	7,600	7,500	7,600	100	1.3%	0	0.0%
Other Services	2,800	2,800	2,800	0	0.0%	0	0.0%
<b>Total Government</b>	<b>13,300</b>	<b>13,200</b>	<b>13,400</b>	<b>100</b>	<b>0.8%</b>	<b>-100</b>	<b>-0.8%</b>
Federal Government	1,200	1,200	1,300	0	0.0%	-100	-7.7%
State Government	5,000	5,000	5,200	0	0.0%	-200	-3.9%
Local Government	7,100	7,000	6,900	100	1.4%	200	2.9%
Local Government Educational Services	3,600	3,600	3,600	0	0.0%	0	0.0%

Source: Indiana Dept. of Workforce Development, Research and Analysis, Current Employment Statistics

### Terre Haute MSA Employment Trends



Source: Indiana Department of Workforce Development, Research & Analysis, Current Employment Statistics | Note: Historical data for the most recent 4 years (both seasonally adjusted and not seasonally adjusted) are revised near the beginning of each calendar year, prior to the release of January estimates for statewide data.

<b>Frequently Listed Jobs</b>	
<b>Top 20 job listings in Region 7 in the past month</b>	
<b>Rank</b>	<b>Occupations</b>
1	Registered Nurses
2	Personal Care Aides
3	Security Guards
4	Helpers--Production Workers
5	Healthcare Practitioners and Technical Workers, All Other
6	Licensed Practical and Licensed Vocational Nurses
7	Customer Service Representatives
8	Heavy and Tractor-Trailer Truck Drivers
9	Farmworkers and Laborers, Crop
10	Welders, Cutters, and Welder Fitters
11	Nursing Assistants
12	Therapists, All Other
13	Retail Salespersons
14	Social and Human Service Assistants
15	Stock Clerks- Stockroom, Warehouse, or Storage Yard
16	Business Operations Specialists, All Other
17	Chief Executives
18	Computer User Support Specialists
19	Counter Attendants, Cafeteria, Food Concession, and Coffee Shop
20	Food Preparation Workers

Source: Indiana Workforce Development, Indiana Career Connect

<b>Applicant Pool</b>	
<b>Top 20 occupations desired by applicants on their resumes in the past 12 months</b>	
<b>Occupations</b>	<b># of applicants</b>
Production Workers, All Other	411
Assemblers and Fabricators, All Other	303
Helpers--Production Workers	269
Cashiers	193
Laborers and Freight, Stock, and Material Movers, Hand	159
Customer Service Representatives	153
Nursing Assistants	136
Managers, All Other	121
Welders, Cutters, Solderers, and Brazers	115
Stock Clerks and Order Fillers	110
Office Clerks, General	106
Combined Food Preparation and Serving Workers, Including Fast Food	103
Construction Laborers	100
Construction and Related Workers, All Other	97
Carpenters	94
Heavy and Tractor-Trailer Truck Drivers	85
Landscaping and Groundskeeping Workers	79
Packaging and Filling Machine Operators and Tenders	79
Industrial Truck and Tractor Operators	78
Packers and Packagers, Hand	78

Source: Indiana Workforce Development, Indiana Career Connect

# BLS Reports

March 2018

## ***Characteristics of minimum wage workers, 2017***

In 2017, 80.4 million workers age 16 and older in the United States were paid at hourly rates, representing 58.3 percent of all wage and salary workers. Among those paid by the hour, 542,000 workers earned exactly the prevailing federal minimum wage of \$7.25 per hour. About 1.3 million had wages below the federal minimum. Together, these 1.8 million workers with wages at or below the federal minimum made up 2.3 percent of all hourly paid workers.

The percentage of hourly paid workers earning the prevailing federal minimum wage or less declined from 2.7 percent in 2016 to 2.3 percent in 2017. This remains well below the percentage of 13.4 recorded in 1979, when data were first collected on a regular basis.

This report presents highlights and statistical tables describing workers who earned at or below the federal minimum wage in 2017. The data are obtained from the Current Population Survey (CPS), a national monthly survey of approximately 60,000 households conducted by the U.S. Census Bureau for the U.S. Bureau of Labor Statistics (BLS). Information on earnings is collected from one-fourth of the CPS sample each month.

## **Highlights**

The following are highlights from the 2017 data:

>**Age.** Minimum wage workers tend to be young. Although workers under age 25 represented only about one-fifth of hourly paid workers, they made up about half of those paid the federal minimum wage or less. Among employed teenagers (ages 16 to 19) paid by the hour, about 8 percent earned the minimum wage or less, compared with about 1 percent of workers age 25 and older.

>**Gender.** Among workers who were paid hourly rates in 2017, about 3 percent of women and about 2 percent of men had wages at or below the prevailing federal minimum.

>**Race and Hispanic or Latino ethnicity.** The percentage of hourly paid workers with wages at or below the federal minimum differed little among the major race and ethnicity groups. About 3 percent of African American or Black workers earned the federal minimum wage or less. Among White, Asian, and Hispanic workers, the percentage was about 2 percent.

>**Education.** Among hourly paid workers age 16 and older, about 4 percent of those without a high school diploma earned the federal minimum wage or less, compared with about 2 percent of those who had a high school diploma (with no college), about 2 percent of those with some college or an associate degree, and about 1 percent of college graduates.

>**Marital status.** Of those paid an hourly wage, never-married workers, who tend to be young, were more likely (4 percent) than married workers (1 percent) to earn the federal minimum wage or less.

>**Full- and part-time status.** About 6 percent of part-time workers (persons who usually work fewer than 35 hours per week) were paid the federal minimum wage or less, compared with about 1 percent of full-time workers.

>**Occupation.** Among major occupational groups, service occupations had the highest percentage of hourly paid workers earning at or below the federal minimum wage, at about 7 percent. About two-thirds of workers earning the minimum wage or less in 2017 were employed in service occupations, mostly in food preparation and serving related jobs.

>**Industry.** The industry with the highest percentage of workers earning hourly wages at or below the federal minimum wage was leisure and hospitality (11 percent). About three-fifths of all workers paid at or below the federal minimum wage were employed in this industry, almost entirely in restaurants and other food services. For many of these workers, tips may supplement the hourly wages received.

>**State of residence.** The states with the highest percentages of hourly paid workers earning at or below the minimum wage were in the South: Kentucky, Mississippi, Tennessee, South Carolina, Louisiana, and Virginia (all were about 4 percent). The states with the lowest percentages of hourly paid workers earning at or below the federal minimum wage were in the West or Midwest: California, Washington, Montana, and Minnesota (all were less than 1 percent). It should be noted that many states have minimum wage laws establishing standards that exceed the federal minimum wage.

Link to the article:

<https://www.bls.gov/opub/reports/minimum-wage/2017/home.htm>

